

Cat 336-07C
 Serial No.: WFF10241



Zeppelin Baumaschinen
Zeppelin Baumaschinen GmbH Niederlassung
Kassel
 Zeppelinstr. 3
 34253 Lohfelden
 Germany
<https://www.zeppelin-cat.de/en/>

Felix Höfler
 Phone: +49 6181915616
 Mobile: +49 15112786694
felix.hoefler@zeppelin.com

Manufacturer	Cat
Category	Tracked Excavators
Year	2021
Hours	3.472

kind of cabin	cabin ROPS
boom	mono boom
stick lenght	3.200 mm
kind of bucket	gp bucket
grapple line	yes
hydraulic lines	lines for hammer/shear
track shoes (pads) wide	600 mm
track shoes (pads) condition	70 %
undercarriage sprockets	70 %
undercarriage idlers	70 %
undercarriage track rollers	70 %
undercarriage track links	70 %
undercarriage track bushings	70 %
undercarriage carrier rollers	70 %
rook guard roof	yes
quick coupler	quick coupler mechanic
quick coupler type	CW45S
operating weight	39,3 t
engine power	233 kW (318 HP)

Net price **249.000,00 EUR (excl. VAT)**
Terms of delivery **FCA Zeppelin branch Kassel**

This offer is without obligation. The offer is based on our General Terms and Conditions of Sale and Delivery. Changes to equipment and accessories required for technical reasons may be made at any time. Subject to errors, changes and intermediate sale. Statutory value-added tax shall be added to all price.

ZEPELIN

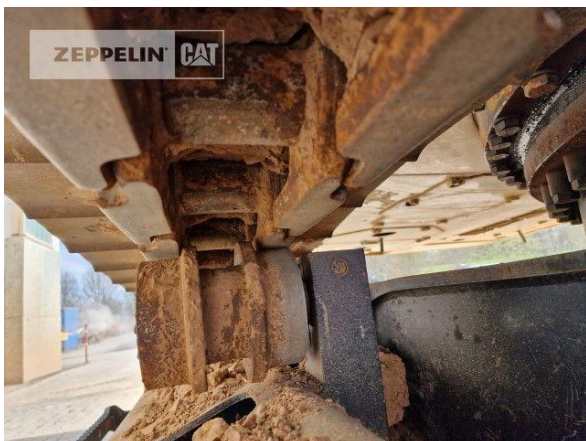
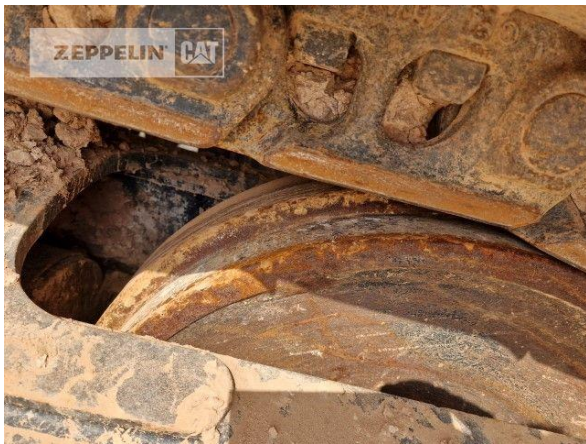


Cat 336-07C
Serial No.: WFF10241

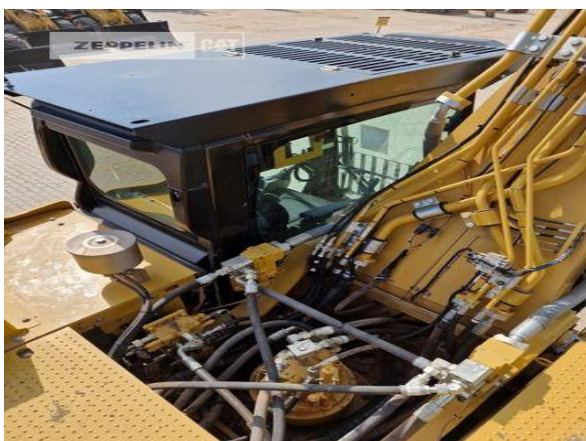


Höhne			
Typ	Schnellwechsler	Gewicht (kg)	560
Parten-Nr.	L 10660-2	Schnittb. (mm)	
Aufnahme	CW45 s HD	Inhalt (USA)	
Baujahr	02/2021		CAT 336

Cat 336-07C
Serial No.: WFF10241



Cat 336-07C
Serial No.: WFF10241



Cat 336-07C
 Serial No.: WFF10241

