

**Cat 320-07A**  
 Serial No.: HEX01883



**Zeppelin Baumaschinen**  
**Zeppelin Baumaschinen GmbH Niederlassung**  
**Berlin**  
 Zeppelinring 23-25  
 15749 Mittenwalde  
 Germany  
<https://www.zeppelin-cat.de/en/>

Christian Reinert  
 Phone: +49 3375903411  
 Mobile: +49 1756169727  
[Christian.Reinert@zeppelin.com](mailto:Christian.Reinert@zeppelin.com)

René Hirschmann  
 Phone: +49 3375903412  
 Fax: +49 3375903450  
 Mobile: +49 1733909955  
[rene.hirschmann@zeppelin.com](mailto:rene.hirschmann@zeppelin.com)

<b>Manufacturer</b>	<b>Cat</b>
<b>Category</b>	<b>Tracked Excavators</b>
<b>Year</b>	<b>2018</b>
<b>Hours</b>	<b>4.937</b>

kind of cabin	cabin ROPS
boom	mono boom
kind of stick	standard
stick lenght	2.900 mm
kind of bucket	gp bucket
cutting width	1.400 mm
bucket condition	100 %
grapple line	yes
hydraulic lines	lines for hammer/shear
track shoes (pads) wide	600 mm
track shoes (pads) condition	70 %
undercarriage sprockets	40 %
undercarriage idlers	50 %
undercarriage track rollers	50 %
undercarriage track links	30 %
undercarriage track bushings	30 %
undercarriage carrier rollers	40 %
rook guard roof	yes
quick coupler	quick coupler mechanic
quick coupler type	CW40
rear view camera	yes
size class	1,2 cbm
operating weight	22,8 t
engine power	127 kW (174 HP)
air conditioning	yes
equipment	Radio, letzte Inspektion bei 4848Bh, UVV bis 02-2024

 ZEPPELIN CAT

**Cat 320-07A**

Serial No.: HEX01883

**Net price**

**94.000,00 EUR (excl. VAT)**

**Terms of delivery**

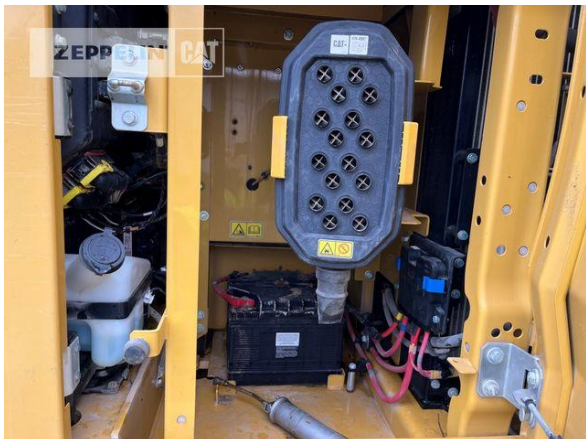
**FCA Zeppelin branch Berlin**

This offer is without obligation. The offer is based on our General Terms and Conditions of Sale and Delivery. Changes to equipment and accessories required for technical reasons may be made at any time. Subject to errors, changes and intermediate sale. Statutory value-added tax shall be added to all price.

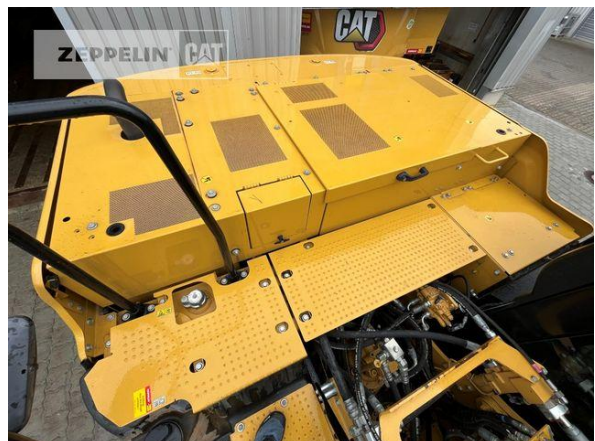
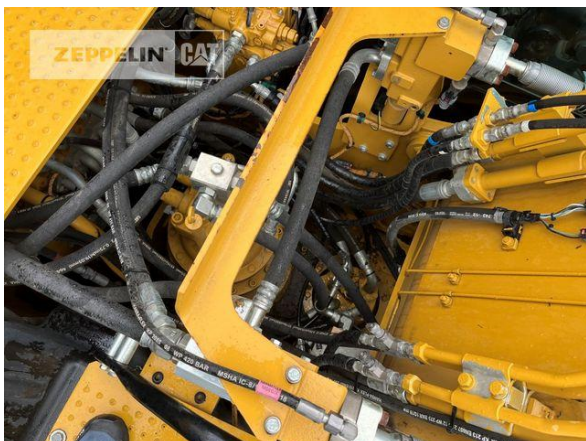
**Cat 320-07A**  
 Serial No.: HEX01883



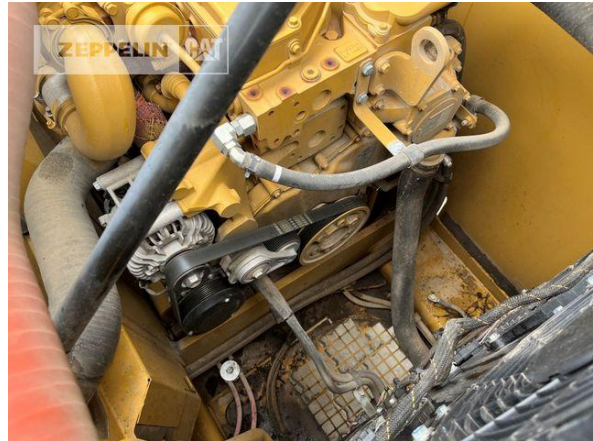
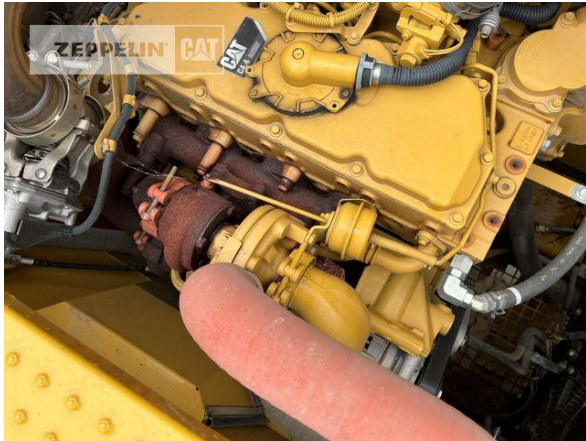
**Cat 320-07A**  
Serial No.: HEX01883



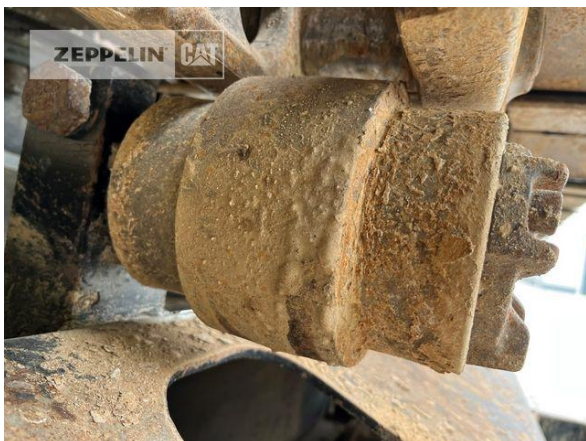
**Cat 320-07A**  
Serial No.: HEX01883



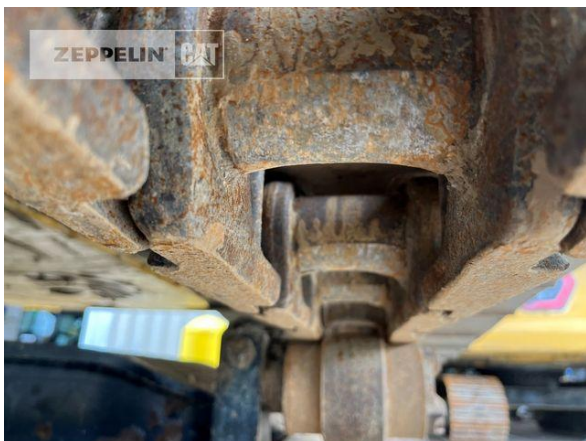
**Cat 320-07A**  
Serial No.: HEX01883



**Cat 320-07A**  
Serial No.: HEX01883



**Cat 320-07A**  
Serial No.: HEX01883





**Cat 320-07A**  
Serial No.: HEX01883

**SERVICEINFORMATION**

**ÖLWECHSEL** 4848  
 Nächster Motorölwechsel bei Betriebsstunden oder spätestens am

5000 %  
 Aufgefüllte Ösorte 10W30CILS

**INSPEKTION** Nächste Inspektion bei Betriebsstunden  
 5000 oder spätestens am %

**KÜHLMITTEL** Kühlmittel Frostschutz bis  
 -36 Überprüft am 2/23

Ausführende Zeppelin Niederlassung 198

zeppelin-cat.de | zeppelin-cat.at

**EMISSION CONTROL INFORMATION**

W7937737

Engine Family: C4.4  
 Displacement: 4.40  
 EPA/ARB Family: JPKXL04.4MW1

THIS ENGINE COMPLIES WITH U.S. EPA REGULATIONS FOR 2018 NONROAD AND STATIONARY DIESEL ENGINES AND CALIFORNIA OFF-ROAD DIESEL ENGINES

ULTRA LOW SULFUR FUEL ONLY

FEL (g/kWh) NMHC: N/A  
 NOx: N/A PM: 0.01

Emissions Control System  
 DDI, TAA, ECM, DOC, CTOX, EGR, SCR, AMOX, EPR

Engine Type 75 <= kW < 130

4244 1800 122.0 kW  Use Service tool to verify  
 kW  Current  
 kW  engine settings  
 kW

e11\*97/68RA\*2012/46\*3053\*02

